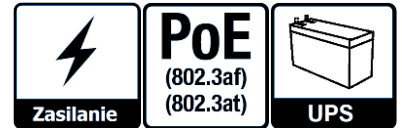
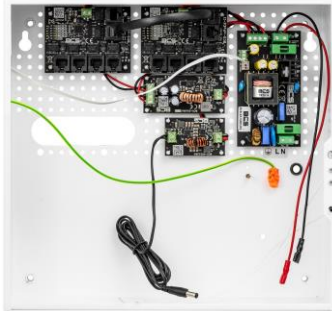


BCS-UPS/IP8/E-S Buffer kit for 9 IP cameras in the housing internal PoE switch 10 / 100Mbps 9xPoE + 1xUplink



BCS-UPS / IP8 / E-S is a set for buffer supply of IP CCTV cameras. The device is a convenient solution to the problem of a buffer power supply for surveillance cameras that require uninterrupted operation. The device is designed to work with IP cameras and other network devices powered in PoE 802.3at / af and PoE PASSIVE standards.

The LONG RANGE mode allows you to increase the transmission range up to 280m with the use of a standard UTP twisted-pair cable.

The system is adapted to work with lead-acid or dry SLA batteries.

The device is closed in the BCS-F internal casing, which is a convenient solution to the problem of aesthetic installation of monitoring devices and termination of wiring inside buildings. The housing is made of sheet steel, powder coated in a semi-matt white color.

- possibility of buffer power supply to 9 PoE 802.3at / af or PoE PASSIVE receivers
- space for 1 18Ah battery
- up to 70W of power on the LAN_5 PoE IN / OUT port
- up to 40W of power on other PoE ports
- possibility of data transmission at 280m (in LONG RANGE mode)
- ability to turn off the power on selected ports
- independent electronic fuses for each PoE channel (auto return)
- low heating inside the housing thanks to the high efficiency of the power supply (> 90%)
- easy and quick commissioning without parameter configuration
- easy expansion of the system by adding additional switches
- possibility to keep spare cables inside the housing

BCS-UPS/IP8/E-S Buffer kit for 9 IP cameras in the housing internal PoE switch 10 / 100Mbps 9xPoE + 1xUplink

LAN ports	10 ports RJ45 10/100Mbps (9 x PoE, 1 x UPLINK)
Port functions	LAN 1 ... LAN 4: INPUT PoE PASSIVE (up to 40W) - switch power supply PoE OUTPUT - for PoE PASSIVE receivers (up to 40W) and 802.3af (up to 15.4W), 802.3at (up to 30W) LAN5: INPUT PoE PASSIVE (up to 70W) - switch power supply PoE OUTPUT (VIN> 48 VDC) - for PoE PASSIVE (up to 70W) and 802.3af (up to 15.4W), 802.3at (up to 30W) receivers LAN6: UPLINK (without PoE power supply)
Operating mode	"STANDARD" mode (MODE = OFF) LAN 1 ... LAN 6 - 10 / 100Mbps, range up to 100m "LONG RANGE" mode (MODE = ON) LAN 1 ... LAN 4 - 10Mbps, range up to 280m LAN 5 ... LAN 6 - 10 / 100Mbps, range up to 100m
Battery	1 x gel or AGM 12V / 18Ah battery
The output voltage of the power	12 VDC +/-15%
PoE output voltage	48 VDC +/- 2%
PSU power	72 W
Efficiency	90% @60W
Input voltage	190 ... 260 VAC, 50 Hz
Battery charging current	1 A or 2 A (selected with JP1 jumper)
Power supply input protection	Time-lag fuse 3.15A
Power supply output protection	Mains supply: Electronic overload protection at the level of 9 A (after a short circuit, a restart of the power supply may be required) Battery operation: 6.3A slow-blow fuse
Port security	LAN 1 ... LAN 6, VIN Overvoltage protection LAN 1 ... LAN 4 0.75A short-circuit protection with auto return LAN 5 1.25A short circuit protection with auto return
Battery circuit protection	Protection against reverse battery connection and overload: 6.3A melting fuse Protection against deep discharge: Battery disconnection for a voltage below 10.2 V with automatic reconnection of the mains voltage
Signaling work	LED1 (yellow) - mains voltage presence LED2 (green) - presence of the output voltage LED3 (red) - battery charging LEDs in LAN 1 ... LAN 5 connectors - PoE power supply on the port
Technical outputs	OUF - no voltage + DC_OUT ACF - no AC voltage Open collector outputs with a maximum load of 50mA (each output)
Startup in the absence of AC power	Automatic activation of the power supply after connecting the battery
Power control at ports	PoE ON / OFF switch - positions 2 ... 6 (LAN 1 ... LAN 5) PoE OFF at the port - switch in the OFF position PoE ENABLED on the port - switch in the ON position
Housing design	BCS-F housing Housing material - 0.8 mm steel sheet, the housing is powder coated in white Opening tamper mounted System punching 4.8 mm in 10.8 mm pitch, Distance to the wall, 6 mm mounting holes
Installation	Wall mounting through 6 mm mounting holes
Level of security	IP20
Working temperature	-10 ... +40°C
Dimensions	300 x 320 x 90 mm
Libra	2,38 kg

