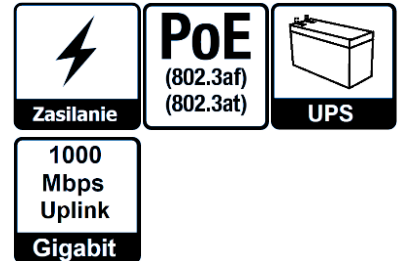
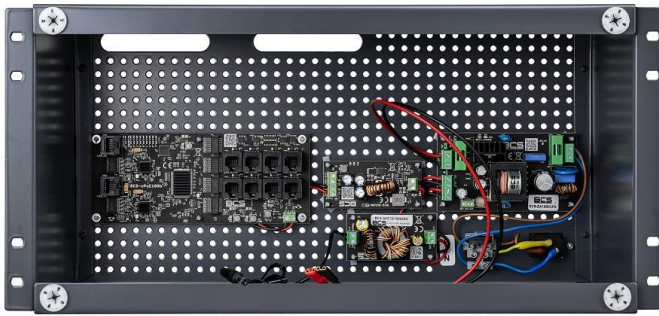


BCS-UPS/IP8Gb/E-S/RACK5U

Buffer set for 8 IP cameras in RACK housing switch 8x PoE 10/100Mbps + 2x Gigabit Uplink



BCS-UPS / IP8Gb / E-S / RACK5U is a set for buffer power supply of IP CCTV cameras. The device is a convenient solution to the problem of a buffer power supply for surveillance cameras that require uninterrupted operation. The device is designed to work with IP cameras and other network devices powered in PoE 802.3at / af and PoE PASSIVE standards.

The device is especially recommended for systems that require higher network bandwidth, such as 4K Ultra HD CCTV monitoring.

The device is closed in a housing that allows it to be installed in a RACK telecommunication cabinet. A well-thought-out and unique design on the Polish market enables installation in one device housing, together with buffer power supply and batteries. The body is made of steel sheet, and the masking cover is made of light aluminum sheet. Both elements are powder coated in a semi-matte graphite RAL 7024 color.

- support for 4K Ultra HD cameras
- possibility of buffer power supply to 8 PoE 802.3at / af or PoE PASSIVE receivers
- space for 1 18 Ah battery
- place for a video recorder (NVR)
- up to 40W of power on PoE ports (LAN_1 to LAN_8)
- the ability to turn off the power on selected PoE ports
- independent electronic fuses for each PoE channel (auto return)
- low heating inside the housing thanks to the high efficiency of the power supply (> 90%)
- easy and quick commissioning without parameter configuration
- easy expansion of the system by adding additional switches
- convenient, tool-free assembly / disassembly of the masking cover

BCS-UPS/IP8Gb/E-S/RACK5U Buffer set for 8 IP cameras in RACK housing switch 8x PoE 10/100Mbps + 2x Gigabit Uplink

LAN ports	10 ports RJ45 (8 x PoE 10/100Mbps, 2 x Gigabit UPLINK)
Port functions	LAN 1 ... LAN 8: PoE OUTPUT - for PoE PASSIVE receivers (up to 40W) and 802.3af (up to 15.4W), 802.3at (up to 30W) LAN G1, LAN G2: UPLINK Gigabit (without PoE power)
Battery	1 x gel or AGM 12V / 18Ah battery
The output voltage of the power	12 VDC +/-15%
PoE output voltage	48 VDC +/- 2%
PSU power	72 W
Efficiency	90% @60W
Input voltage	190 ... 260 VAC, 50 Hz
Battery charging current	1 A or 2 A (selected with JP1 jumper)
Power supply input protection	Time-lag fuse 3.15A
Power supply output protection	Mains supply: Electronic overload protection at the level of 9 A (after a short circuit, a restart of the power supply may be required) Battery operation: 6.3A slow-blow fuse
Port security	LAN 1 ... LAN 8, Vin: Overvoltage protection LAN 1 ... LAN 8: Short-circuit protection 0.75 A with auto return
Battery circuit protection	Protection against reverse battery connection and overload: 6.3A melting fuse Protection against deep discharge: Battery disconnection for voltage below 10.2 V with automatic return to mains voltage
Signaling work	LED1 (yellow) - mains voltage presence LED2 (green) - presence of the output voltage LED3 (red) - battery charging LEDs in LAN 1 ... LAN 5 connectors - PoE power supply on the port
Technical outputs	UF - no voltage + DC_OUT ACF - no AC voltage Open collector outputs with a maximum load of 50mA (each output)
Startup in the absence of AC power	Automatic activation of the power supply after connecting the battery
Power control at ports	PoE ON / OFF switch - positions 1 ... 8 (LAN1 ... LAN 8) PoE OFF at the port - switch in the OFF position PoE ENABLED on the port - switch in the ON position
Housing design	RACK5U housing Housing material KORPUS - 0.8 mm steel sheet painted in color Housing material COVER - 2 mm aluminum sheet painted graphite (RAL 7024) System punching 4.8 mm in a 10.8 mm pitch
Installation	RACK 19" cabinet, M6 screws (included)
Level of security	IP20
Working temperature	-10 ... +40°C
Dimensions	440 x 220 x 180 mm
Weight	3,2 kg

